

FOCUS

Euroseries

Datasheet



chenhsong.com
chenhsong.eu

About Chen Hsong

Chen Hsong, established in 1958, is one of the largest manufacturers of injection moulding machines in the world, with annual sales exceeding 20,000 sets.

For over 65 years, Chen Hsong sold to more than 85 countries across the globe, supplying injection moulding machines with clamping force from 20 tons to 6,500 tons. In 1991, Chen Hsong became listed on the Hong Kong Stock Exchange (stock code: 00057). Headquartered in Hong Kong, Chen Hsong operates numerous manufacturing and research facilities in China, including Shenzhen, Shunde, Ningbo and Taiwan, as well as in Japan.

Since 2011 when Chen Hsong and Mitsubishi Plastics Technology of Japan entered into a worldwide strategic partnership, Chen Hsong has been progressively upgrading its internal management, production and quality systems with industry best practices, including TPS (lean manufacturing), M-System (Mitsubishi quality system) and a Japanese “perfect quality” focus towards all R&D, procurement and production activities. For over a decade since then, and leveraging its superior supply chain and production capabilities, Chen Hsong also supplied Mitsubishi, as OEM, with world-renowned “MMX” large-tonnage two-platen injection moulding machines (up to 3,500 tons).

To provide customers with even better peace-of-mind, Chen Hsong insists on being the only fully vertically-integrated maker of injection moulding machines globally, starting from basic ductile iron casting to high-end fabrication and machining, and all major production steps until the completed assembly of each machine. Only through absolute control of each fine step of the manufacturing process would customers be best served with professionalism, quality and perfection.

65⁺
Years of Excellence
Since 1958

200⁺
Patented technologies

20⁺
Software IP

20,000
Sets / year
One of the largest producers of injection
moulding machines in the world

Operates
800,000m²
Production facilities with global presence

Shenzhen



Taiwan



Shunde



Ningbo



Chen Hsong in Europe

Chen Hsong Europe is headquartered in Germany, with a large stock of ready-to-ship machines and spare parts.

We welcome all enquiries and requests for demonstrations, mould trials, technical support and training.

At Chen Hsong, we hold to the motto of "Think Global, Act Local" as we believe our clients are best served by experts that understand their needs and applications intimately.

That is why Chen Hsong works with a global network of carefully-selected distributors, supported by our European HQ in Germany as well as our global team of engineers.

Chen Hsong distributors not only sell machines, they also provide professional project advice, installation, training, maintenance, spare parts and after-sales technical service.



European Standards

All Chen Hsong equipment sold in Europe conform strictly to fully-certified CE safety standards.

Stability, reliability, precision and power efficiency are also among the best in its class.

As Europe drives towards its goal of carbon neutrality, Chen Hsong does its part offering only fully-servo-driven equipment with the highest energy efficiency.

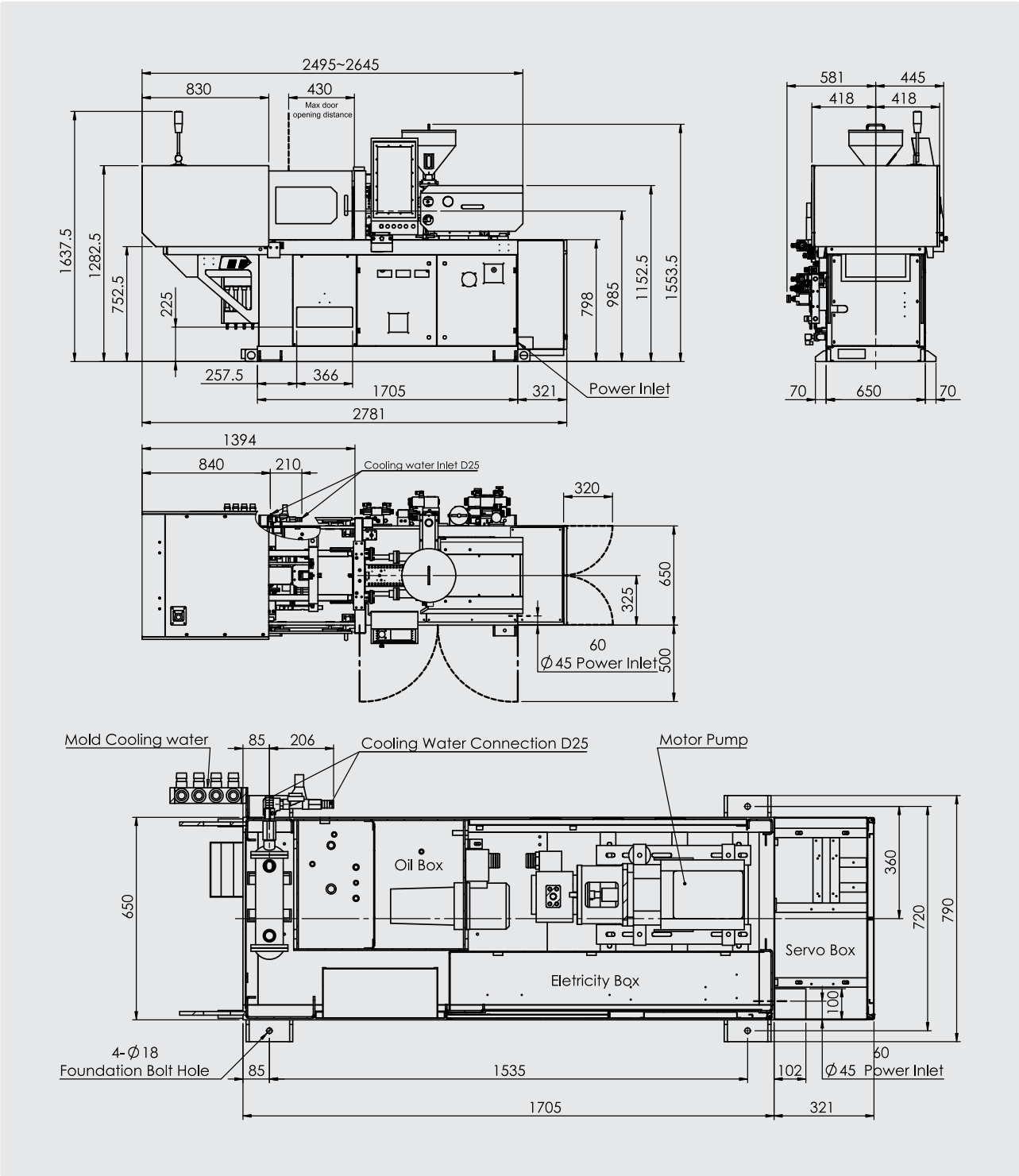
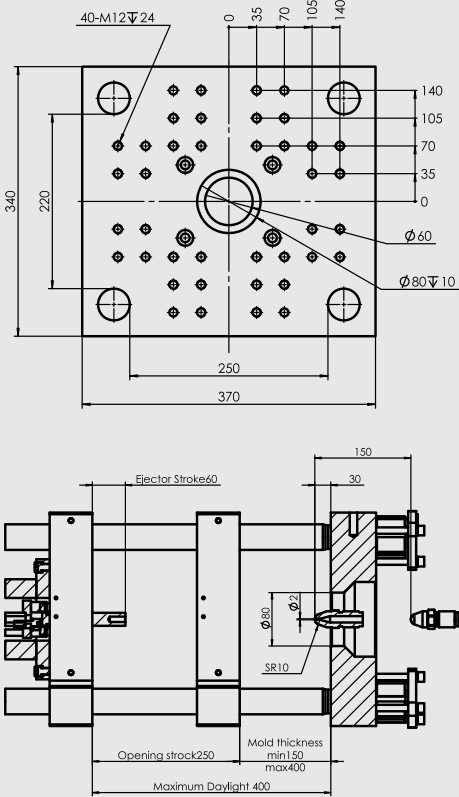
FOCUS Euroseries

SPECIFICATIONS	UNIT	FOCUS20-SVP/2			FOCUS35-SVP/2			FOCUS60-SVP/2		
INJECTION UNIT										
Screw Diameter	mm	18	20	22	22	25	28	25	28	31
Screw L/D	/	21	19	17.5	23	20	18	22	20	18
Injection Capacity (Theoretical)	cm³	20	25	30	43	56	71	64	80	98
Injection Shot Weight (Max.)	g	18	22	27	39	51	64	58	73	89
Injection Pressure (Max.)	MPa	210	170	140	219	170	135	203	162	132
Injection Rate (Max.)	cm³/s	59	73	88	55	71	89	65	81	100
Injection Speed (Max.)	mm/s	232			144			132		
Injection Stroke (Max.)	mm	80			115			130		
Screw RPM (Max.)	rpm	290			230			240		
Nozzle Contact Force (Max.)	kN	2			3.8			3.3		
Nozzle Stroke (Max.)	mm	150			180			200		
CLAMPING UNIT										
Clamping Force (Max.)	kN	200			350			600		
Clamp Opening Stroke (Max.)	mm	250			230			270		
Platen Dimensions (HxV)	mm	370x340			450x430			450x450		
Distance Between Tie Bars (HxV)	mm	250x220			280x260			310x310		
Mold Thickness (Min.-Max.)	mm	150(Min)			80-300			100-330		
Max. Daylight	mm	400			530			600		
Ejector Force (Max.)	kN	17			27			28		
Ejector Stroke (Max.)	mm	60			60			75		
No. of Ejectors	PCS	1			1			3		
Locating Ring Diameter	mm	80			100			100		
Dry Cycle	s	1.5			1.6			1.8		
OTHERS										
System Pressure	MPa	17.5			17			14.5		
Motor Power (Rated)	kW	8.9			8.9			8.9		
Barrel Heating Power (Max.)	kW	3			4.2			5.2		
Max.Rated Current	A	26.3			26.6			31.9		
Temperature Control Zones	Zone	3			3+1			3+1		
Machine Dimensions (LxWxH)	m	2.8x1.05x1.65			3.3x1.1x1.8			3.4x1.1x1.85		
Oil Tank Capacity	L	80			90			130		
Machine Weight	kg	1200			1600			2000		

All technical data and features are subject to change without prior notice.

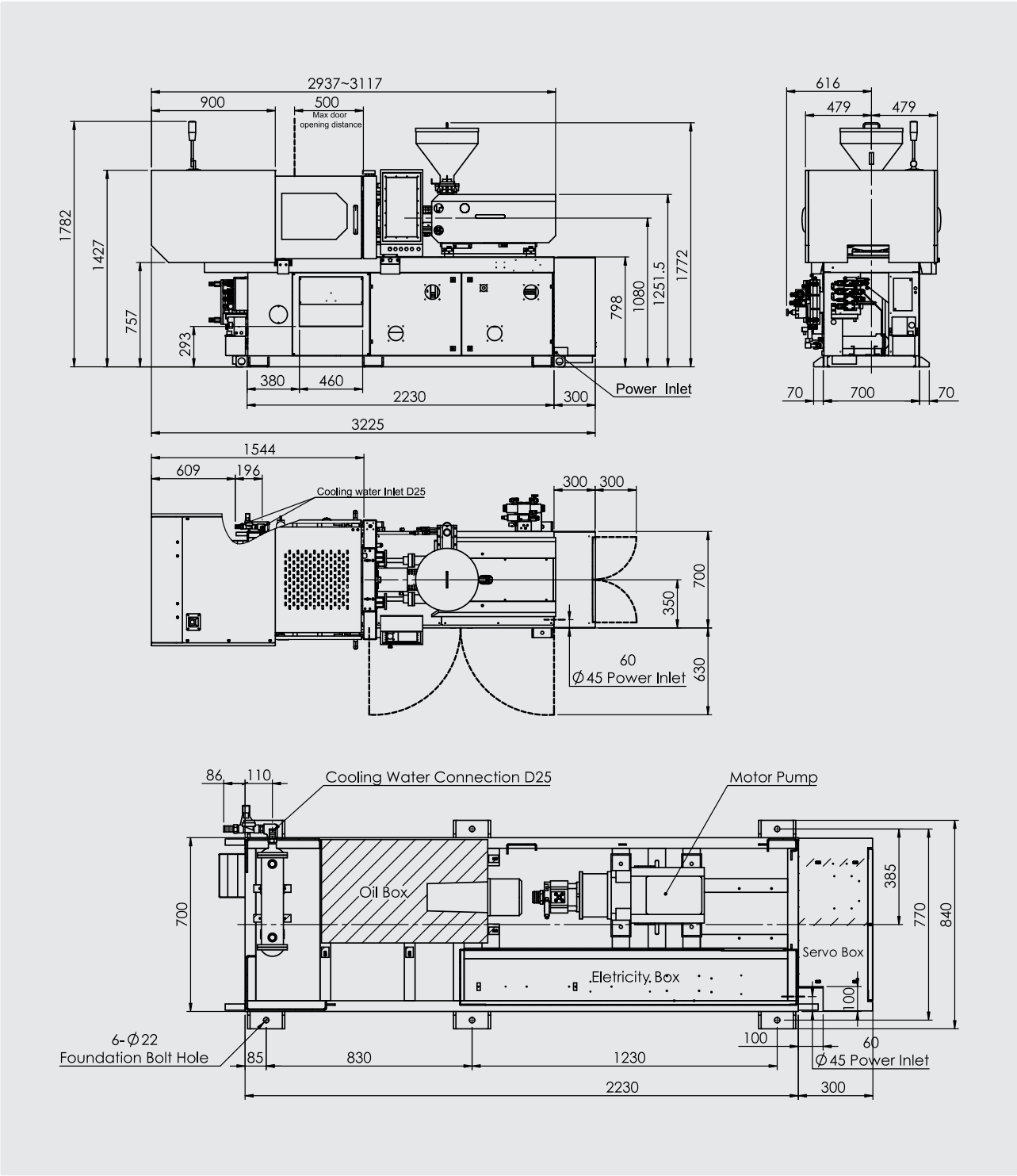
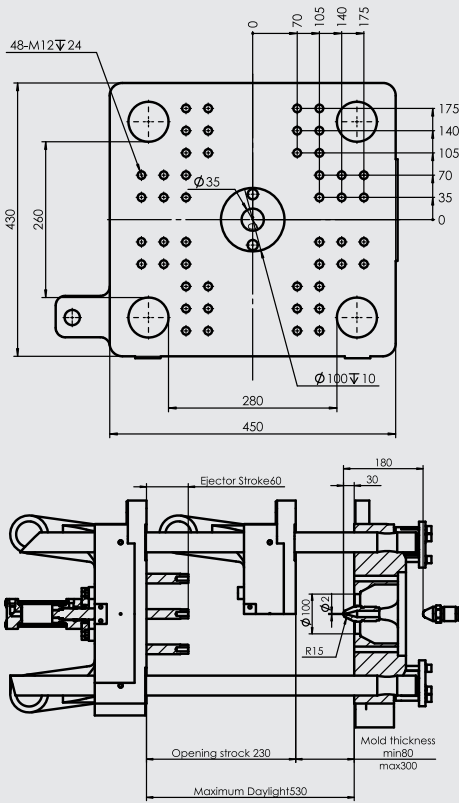
FOCUS20-SVP/2 Euroseries

SPECIFICATIONS	UNIT	FOCUS20-SVP/2		
INJECTION UNIT				
Screw Diameter	mm	18	20	22
Screw L/D	/	21	19	17.5
Injection Capacity (Theoretical)	cm³	20	25	30
Injection Shot Weight (Max.)	g	18	22	27
Injection Pressure (Max.)	MPa	210	170	140
Injection Rate (Max.)	cm³/s	59	73	88
Injection Speed (Max.)	mm/s	232		
Injection Stroke (Max.)	mm	80		
Screw RPM (Max.)	rpm	290		
Nozzle Contact Force (Max.)	kN	2		
Nozzle Stroke (Max.)	mm	150		
CLAMPING UNIT				
Clamping Force (Max.)	kN	200		
Clamp Opening Stroke (Max.)	mm	250		
Platen Dimensions (HxV)	mm	370x340		
Distance Between Tie Bars (HxV)	mm	250x220		
Mold Thickness (Min.-Max.)	mm	150(Min)		
Max. Daylight	mm	400		
Ejector Force (Max.)	kN	17		
Ejector Stroke (Max.)	mm	60		
No. of Ejectors	PCS	1		
Locating Ring Diameter	mm	80		
Dry Cycle	s	1.5		
OTHERS				
System Pressure	MPa	17.5		
Motor Power (Rated)	kW	8.9		
Barrel Heating Power (Max.)	kW	3		
Max.Rated Current	A	26.3		
Temperature Control Zones	Zone	3		
Machine Dimensions (LxWxH)	m	2.8x1.05x1.65		
Oil Tank Capacity	L	80		
Machine Weight	kg	1200		



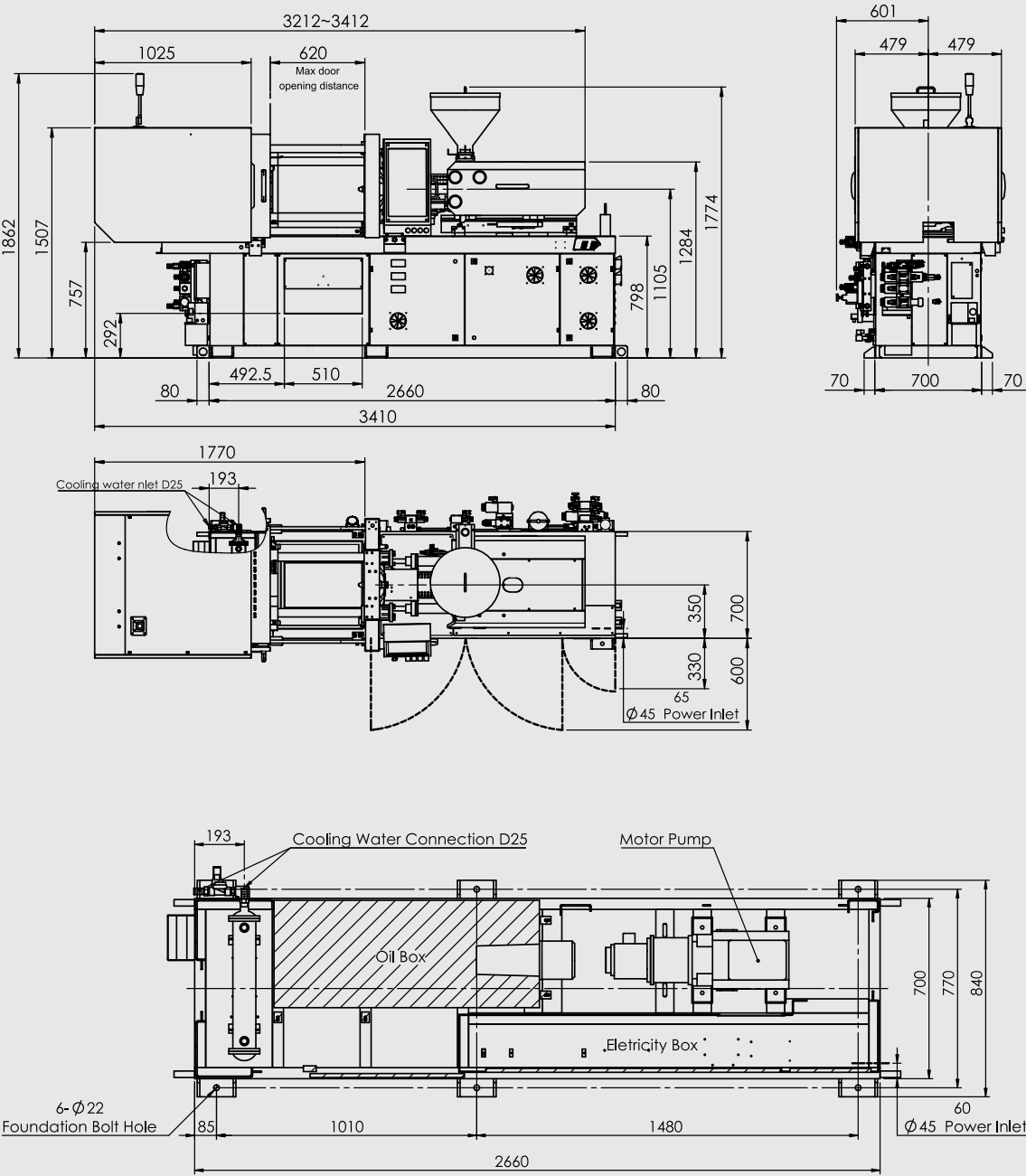
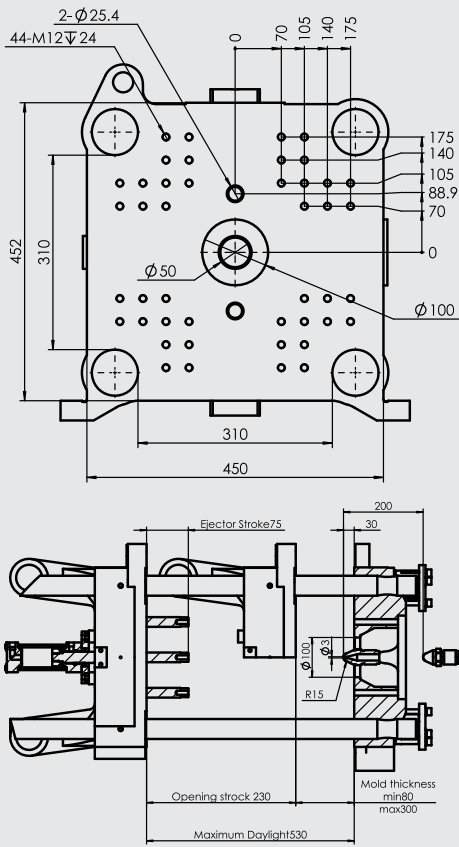
FOCUS35-SVP/2 Euroseries

SPECIFICATIONS	UNIT	FOCUS35-SVP/2		
INJECTION UNIT				
Screw Diameter	mm	22	25	28
Screw L/D	/	23	20	18
Injection Capacity (Theoretical)	cm³	43	56	71
Injection Shot Weight (Max.)	g	39	51	64
Injection Pressure (Max.)	MPa	219	170	135
Injection Rate (Max.)	cm³/s	55	71	89
Injection Speed (Max.)	mm/s	144		
Injection Stroke (Max.)	mm	115		
Screw RPM (Max.)	rpm	230		
Nozzle Contact Force (Max.)	kN	3.8		
Nozzle Stroke (Max.)	mm	180		
CLAMPING UNIT				
Clamping Force (Max.)	kN	350		
Clamp Opening Stroke (Max.)	mm	230		
Platen Dimensions (HxV)	mm	450x430		
Distance Between Tie Bars (HxV)	mm	280x260		
Mold Thickness (Min.-Max.)	mm	80-300		
Max. Daylight	mm	530		
Ejector Force (Max.)	kN	27		
Ejector Stroke (Max.)	mm	60		
No. of Ejectors	PCS	1		
Locating Ring Diameter	mm	100		
Dry Cycle	s	1.6		
OTHERS				
System Pressure	MPa	17		
Motor Power (Rated)	kW	8.9		
Barrel Heating Power (Max.)	kW	4.2		
Max.Rated Current	A	26.6		
Temperature Control Zones	Zone	3+1		
Machine Dimensions (LxWxH)	m	3.3x1.1x1.8		
Oil Tank Capacity	L	90		
Machine Weight	kg	1600		

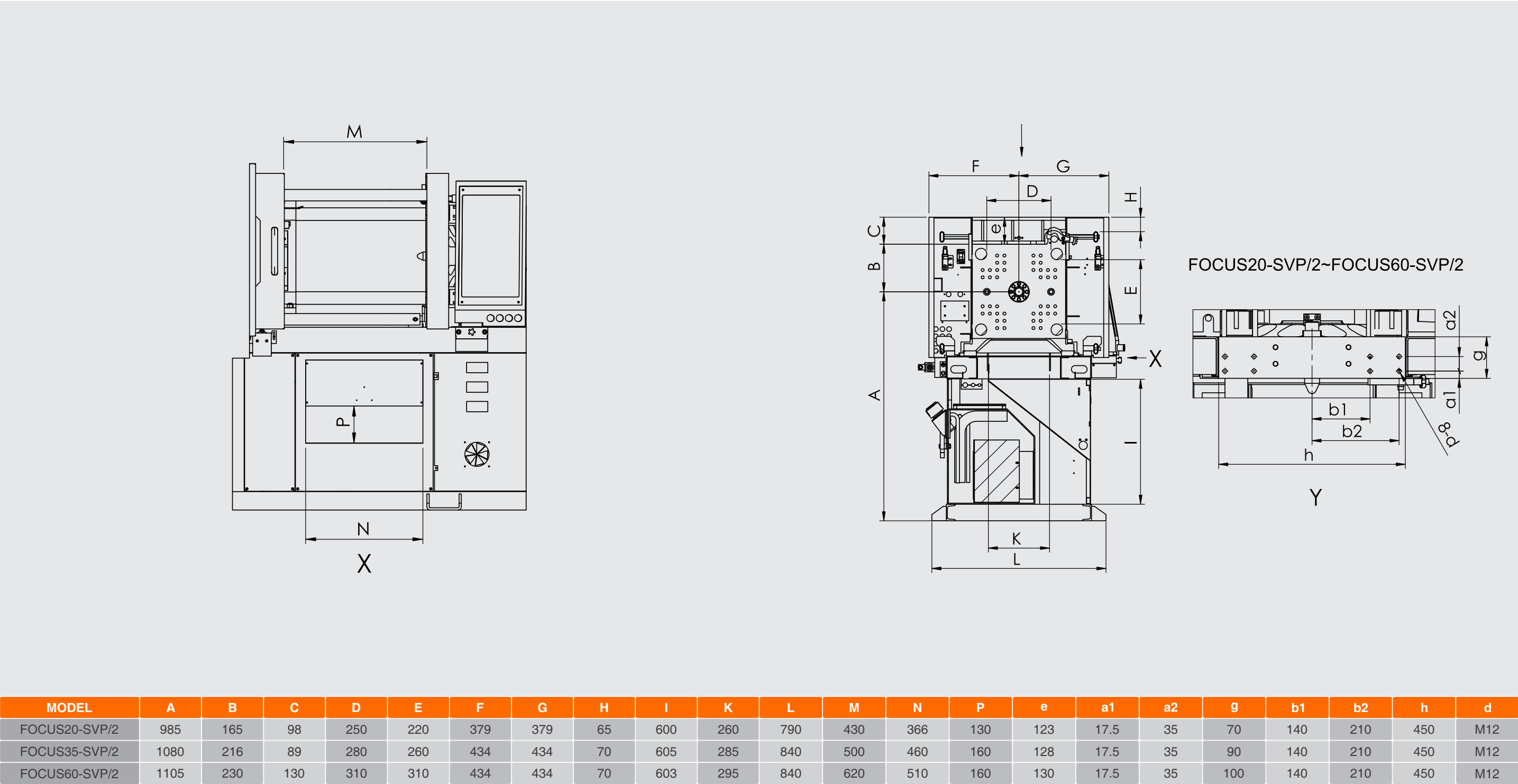


FOCUS60-SVP/2 Euroseries

SPECIFICATIONS	UNIT	FOCUS60-SVP/2		
INJECTION UNIT				
Screw Diameter	mm	25	28	31
Screw L/D	/	22	20	18
Injection Capacity (Theoretical)	cm³	64	80	98
Injection Shot Weight (Max.)	g	58	73	89
Injection Pressure (Max.)	MPa	203	162	132
Injection Rate (Max.)	cm³/s	65	81	100
Injection Speed (Max.)	mm/s	132		
Injection Stroke (Max.)	mm	130		
Screw RPM (Max.)	rpm	240		
Nozzle Contact Force (Max.)	kN	3.3		
Nozzle Stroke (Max.)	mm	200		
CLAMPING UNIT				
Clamping Force (Max.)	kN	600		
Clamp Opening Stroke (Max.)	mm	270		
Platen Dimensions (HxV)	mm	450x450		
Distance Between Tie Bars (HxV)	mm	310x310		
Mold Thickness (Min.-Max.)	mm	100-330		
Max. Daylight	mm	600		
Ejector Force (Max.)	kN	28		
Ejector Stroke (Max.)	mm	75		
No. of Ejectors	PCS	3		
Locating Ring Diameter	mm	100		
Dry Cycle	s	1.8		
OTHERS				
System Pressure	MPa	14.5		
Motor Power (Rated)	kW	8.9		
Barrel Heating Power (Max.)	kW	5.2		
Max.Rated Current	A	31.9		
Temperature Control Zones	Zone	3+1		
Machine Dimensions (LxWxH)	m	3.4x1.1x1.85		
Oil Tank Capacity	L	130		
Machine Weight	kg	2000		



Robot installation Dimension diagram



All technical data and features are subject to change without prior notice.

FOCUS Euroseries

STANDARD AND OPTIONAL FEATURES		
CLAMPING UNIT	STANDARD	OPTION
Automatic mould height adjustment	●	
Hydraulic safety device	●	
Euromap 2 platen design	●	
Euromap 13	●	
Euromap 18 robot mounting	●	
Euromap 67 robot interface	●	
Euromap 70 & 70.1 interface for magnetic mould clamps		○
Extended mould height		○
Mechanical safety bar	●	
Product chute photo sensor	●	
Electric power door (front) with sensor		○
Infrared light guard (front door)		○
Automatic lubrication for toggles	●	
Automatic lubrication for mold height adjust		○
Manual lubrication pump for mold height adjust	●	
Additional core pulls (on moving platen)	2	
Air-blows	1×FP 1×MP	
Additional core-pulls		○
Additional air-blows		○
Parallel core pull movements		○
Ejection-on-fly		○
Electric power door (front)		○
Automatic clamping force control		○
OTHERS		
Power sockets 400V3P32A		○
Power sockets 400V3P16A	2	
Power sockets 240V1P32A		○
Power sockets 240V1P16A	2	
Water manifolds (extra)	●	
Hydraulic by-pass filter	●	
Hydraulic oil pre-heat	●	

All technical data and features are subject to change without prior notice.

STANDARD AND OPTIONAL FEATURES		
INJECTION UNIT	STANDARD	OPTION
Ceramic heater bands	●	
Nitrited screw and barrel	●	
Bi-metallic screw and barrel		○
Shut-off nozzle		○
Linear transducer for injection	●	
Linear transducer on injection carriage	●	
Screw rpm indicator	●	
Manual lubrication pump for injection unit		○
Simultaneous recovery / parallel plasticising		○
Hopper slider	●	
Hopper	●	
Injection pressure display	●	
Feed zone temperature control	●	
Barrel insulation jacket	●	
Digital back pressure control	●	
Broken thermocouple detection alarm		○
Blocked nozzle and overflow detection	●	
Hydraulic/pneumatic valve gates control		○
CONTROLLER		
B&R 9 controller (10.4" display)	●	
Sequence editor	●	
High-sensitivity mould protection	●	
Ethernet interface		○
USB interface	●	
Euromap 67 interface	●	
Industry 4.0 connectivity		○
OPC-UA interface		○
Freely programmable core pulls	●	
Free I/O configuration	●	
Hot-runners control	●	